

'Afternoon Walk' Stole

croched in Drops Delight



By special permission. Copyright DROPS DESIGN A/S. DROPS pattern: de-150

'Afternoon Walk' crocheted stole in Drops Delight, with fan pattern and chain spaces.
By special permission. Copyright DROPS DESIGN A/S. DROPS pattern: de-150

MEASUREMENTS:

Size: Approx. 30 x 170 cm

MATERIALS:

- **Drops Delight** (75% Wool, 25% Polyamide, 4 Ply yarn, available in 50g balls):
200 g shade no. 11 'Lilac/Green'
- **A 3mm crochet hook** (or size needed to get 24 tr x 13 rows = 10 x 10 cm, 1 repetition of A.1B = width 7.5 cm)

INSTRUCTIONS:

PATTERN: See diagram A.1.

STOLE:

Worked back and forth in 2 parts from mid back and down.

Work the first 2 parts (= the middle of the stole) in A.1 as follows:

Work 114 ch on hook size 3 mm with Delight, turn and work 1 dc in 2nd ch from hook, work * 6 ch, skip 6 ch, work 1 dc in next ch * repeat from *-* the entire row = 16 ch-spaces for each of the 2 parts.

Then work the first part of the stole according to diagram as follows (= from WS):

Work A.1A over the first 3 ch-spaces, A.1B over the next 12 ch-spaces and

finish with A.1C over last ch-space.

Then repeat A.X upwards - REMEMBER CROCHET TENSION.

Continue like this until piece measures approx. 85 cm - adjust after 6th row in A.X (after fans are done). Fasten off.

Then work the other part of the stole the same way as on first part but work the 16 ch-spaces in opposite direction of the middle.

The stole measures approx. 180 cm in total.

DIAGRAM:

A1:

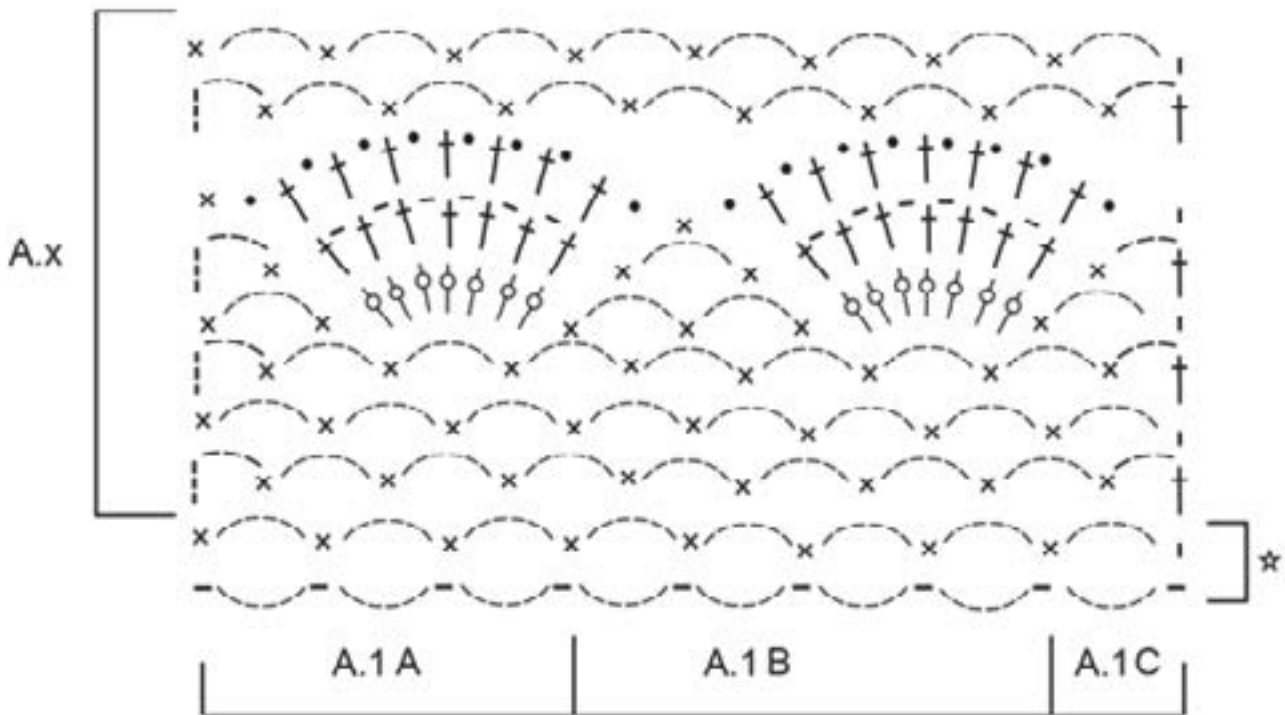


DIAGRAM EXPLANATIONS:

- = chain stitch (ch)
- = Picot: 3 ch, 1 tr in first ch
- = treble crochet (tr) around ch space
- ✕ = double crochet (dc)
- ⊕ = tr in tr/ch
- ☆ = the first 2 rows are explained in the pattern - the rows have already been worked

By special permission. Copyright DROPS DESIGN A/S. DROPS pattern: de-150