

'Serafina' Knitted Dress

knitted in Drops Alpaca



DROPS DESIGN®
www.garnstudio.com

By special permission. Copyright DROPS DESIGN A/S. DROPS pattern: z-100-by

'Serafina' Knitted dress with lace pattern and garter stitch for baby. Size 0 - 4 years Knitted in Drops Alpaca.
By special permission. Copyright DROPS DESIGN A/S. DROPS pattern: z-100-by

SIZE:

Age: 0/1 - 1/3 - 6/9 - 12/18 months (2 - 3/4) years

Equivalent to child's approx. length in cm: 48/52 - 56/62 - 68/74 - 80/86 (92 - 98/104)

MATERIALS:

- **Drops Alpaca** (100% Alpaca 4 Ply yarn, available in 50g balls):
100-100-150-150 (150-150) g colour 4305 - Dark Indigo
- A **3mm, 40cm or 60cm circular knitting needle** (or size needed to get 24 stitches and 32 rows in stocking stitch = width 10 cm and 10 cm vertically)
- 2 x **15mm Drops fower-shaped Mother of Pearl white buttons**



PATTERN INFORMATION:

GARTER STITCH (in the round):

1 ridge = 2 rounds. Knit 1 round and purl 1 round.

GARTER STITCH (back and forth):

1 ridge = knit 2 rows.

PATTERN:

See diagrams A.1 and A.2. Choose diagram for your size. Diagrams show all rows in pattern seen from the right side.

DECREASE TIP-1 (applies to evenly-spaced decrease):

To calculate how to decrease evenly, use the total number of stitches on row (e.g. 168 stitches) and divide stitches by number of decreases to be done (e.g. 6) = 28.

In this example, work approx. every 27th and 28th stitch together.

DECREASE TIP-2 (applies to armholes):

Decrease inside 3 edge stitches in garter stitch. All decreases are done from the right side.

Decrease before 3 edge stitches as follows: Knit 2 together.

Decrease after 3 edge stitches as follows: Slip 1 stitch knitwise, knit 1, pass slipped stitch over stitch worked.

INSTRUCTIONS:

Dress is worked in the round on a circular needle up to armhole, then front piece and back piece are worked back and forth separately. Neck edge is worked back and forth on needle.

BODY:

Cast on 168-180-204-228 (252-276) stitches on a 3mm circular needle with Drops Alpaca.

Insert 1 marker at beginning of round and 1 marker after 84-90-102-114 (126-138) stitches. (Markers indicate sides of garment.)

Then work A.1 (= 12 stitches) over all stitches (= 14-15-17-19 (21-23) times in width). **REMEMBER THE KNITTING TENSION!**

When A.1 has been worked 1 time vertically, piece measures approx. 8 cm.

Then work A.2 (= 12 stitches) over all stitches (= 14-15-17-19 (21-23) times in width).

On rounds marked with arrow, decrease stitches evenly - read DECREASE TIP-1.

For every time 12 stitches are decreased in total, work 1 repetition less of A.2 in width.

When all decreases are done, there are 108-120-132-156 (156-180) stitches on needle (= 54-60-66-78 (78-90) stitches on each side of marker).

READ ALL OF THE FOLLOWING SECTION BEFORE CONTINUING!

WORK PATTERN WHILE AT THE SAME TIME DECREASING FOR ARMHOLE THE SIDE AS FOLLOWS:

PATTERN:

Continue with pattern. When A.2 has been worked vertically, continue in GARTER STITCH - see explanation above. Piece measures approx. 27-27-33-33 (39-39) cm.

ARMHOLE:

When piece measures 24-26-31-36 (41-44) cm, continue as follows:

Work 9 stitches in garter stitch, then work pattern/garter stitch as before, but decrease 4-4-4-8 (2-6) stitches evenly until 9 stitches remain before next marker.

Work 18 stitches in garter stitch, then work pattern/garter stitch as before, but decrease 4-4-4-8 (2-6) stitches evenly until 9 stitches remain on round.

Finish with 9 stitches in garter stitch = 100-112-124-140 (152-168) stitches in total (= 50-56-62-70 (76-84) stitches on each side of markers).

Continue like this until piece measures 25-27-32-37 (42-45) cm.

Now cast off stitches for armhole as follows:

Cast off the first 6 stitches, then work 3 stitches in garter stitch.

Work pattern until 9 stitches remain before next marker, then work 3 stitches in garter stitch, cast off the next 12 stitches and work 3 stitches in garter stitch.

Work pattern as before until 9 stitches remain, then work 3 stitches in garter stitch and cast off the last 6 stitches.

Now finish front and back piece separately.

By special permission. Copyright DROPS DESIGN A/S. DROPS pattern: z-100-by

BACK PIECE:

Now work back and forth.
= 38-44-50-58 (64-72) stitches.

Continue with pattern and 3 stitches in garter stitch in each side of piece. Then decrease 1 stitch for armhole inside 3 stitches in garter stitch in each side of piece - read DECREASE TIP-2!

Decrease like this on every other row 3-4-5-4 (4-5) times in total = 32-36-40-50 (56-62) stitches.

When piece measures 32-34-40-46 (52-56) cm, cast off the middle 16-18-22-24 (26-26) stitches for neck = 8-9-9-13 (15-18) stitches on each shoulder.

Now finish each shoulder separately.

LEFT SHOULDER:

Continue in stocking stitch with 3 stitches in garter stitch out towards armhole as before until piece measures 34-36-42-48 (54-58) cm in total. Cast off by purling from wrong side.

This shoulder is sewn together with left shoulder on front piece later.

RIGHT SHOULDER:

Continue in stocking stitch with 3 stitches in garter stitch out towards armhole as before until piece measures 34-36-42-48 (54-58) cm in total. Cast off by knitting from wrong side.

On this shoulder, sew on buttons later.

FRONT PIECE:

Work as on back piece until piece measures 30-32-37-42 (48-51) cm.

Now cast off the middle 10-12-16-16 (18-18) stitches for neck = 11-12-12-17 (19-22) stitches on each shoulder.

Now finish each shoulder separately.

RIGHT SHOULDER:

Cast off 1 stitch on every row from neck 3-3-3-4 (4-4) times in total = 8-9-9-13 (15-18) stitches.

When piece measures 32-34-40-46 (52-56) cm, work in stocking stitch with 3 stitches in garter stitch out towards armhole.

When piece measures 34-36-42-48 (54-58) cm, decrease for 2 buttonholes from right side as follows:

Knit 1-1-1-2 (3-3), knit 2 together, make 1 yarn over (= 1 buttonhole), knit 2-2-2-4 (5-8), knit 2 together, make 1 yarn over (= 1 buttonhole), finish with 1-2-2-3 (3-3) stitches in garter stitch.

Cast off by knitting on next row from wrong side.

LEFT SHOULDER:

Continue in stocking stitch with 3 stitches in garter stitch out towards armhole as before until piece measures 34-36-42-48 (54-58) cm in total.

Cast off by purling from wrong side. This shoulder is sewn together with left shoulder on back piece later.

ASSEMBLY:

Sew buttons on to right shoulder on back piece. Sew left shoulder together with grafting/kitchener stitches.

NECK EDGE:




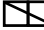
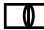

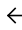

Worked back and forth.

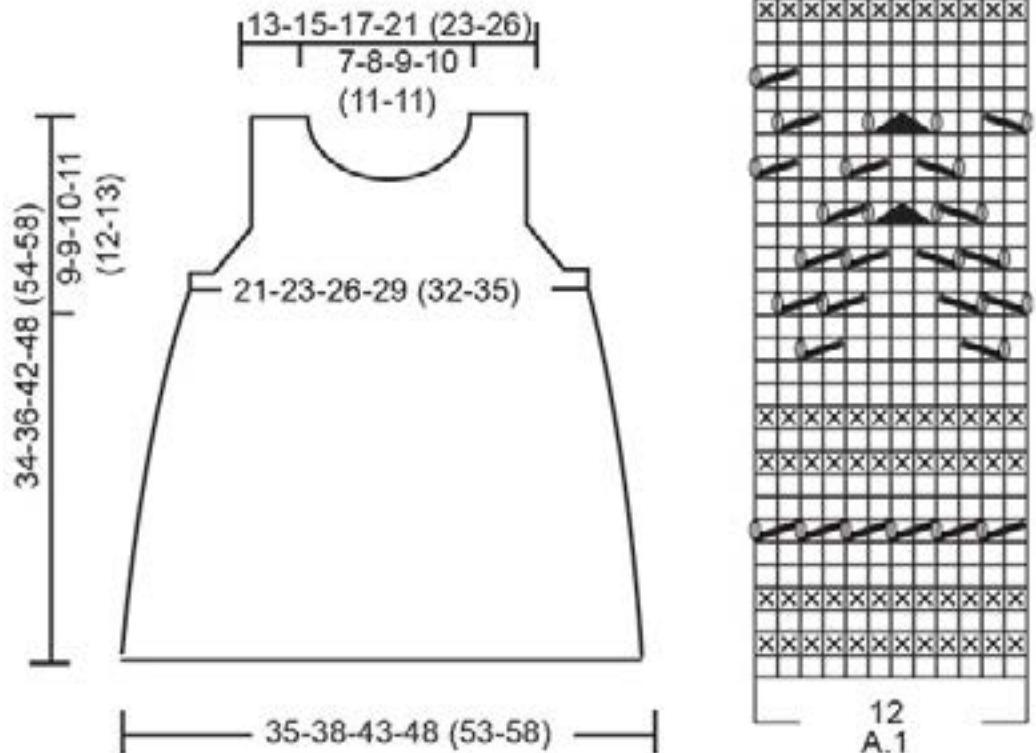
Begin at right shoulder on back piece and pick up 46-70 stitches around the neck from right side.

Knit 3 rows, cast off by knitting, make sure to avoid a tight cast-off edge, cast off with 1 larger needle size if needed.

DIAGRAMS:

DIAGRAM EXPLANATIONS:

-  = knit from the right side, purl from the wrong side
-  = purl from the right side, knit from the wrong side
-  = knit 2 together
-  = slip 1 stitch knitwise, knit 1, pass slipped stitch over
-  = between 2 stitches, make 1 yarn over
-  = slip 2 stitches knitwise, knit 1, pass the 2 slipped stitches over
-  * = on this round, decrease 6 stitches evenly
-  = on this round/row, decrease 12 stitches evenly



By special permission. Copyright DROPS DESIGN A/S. DROPS pattern: z-100-by

DIAGRAMS CONTINUED:

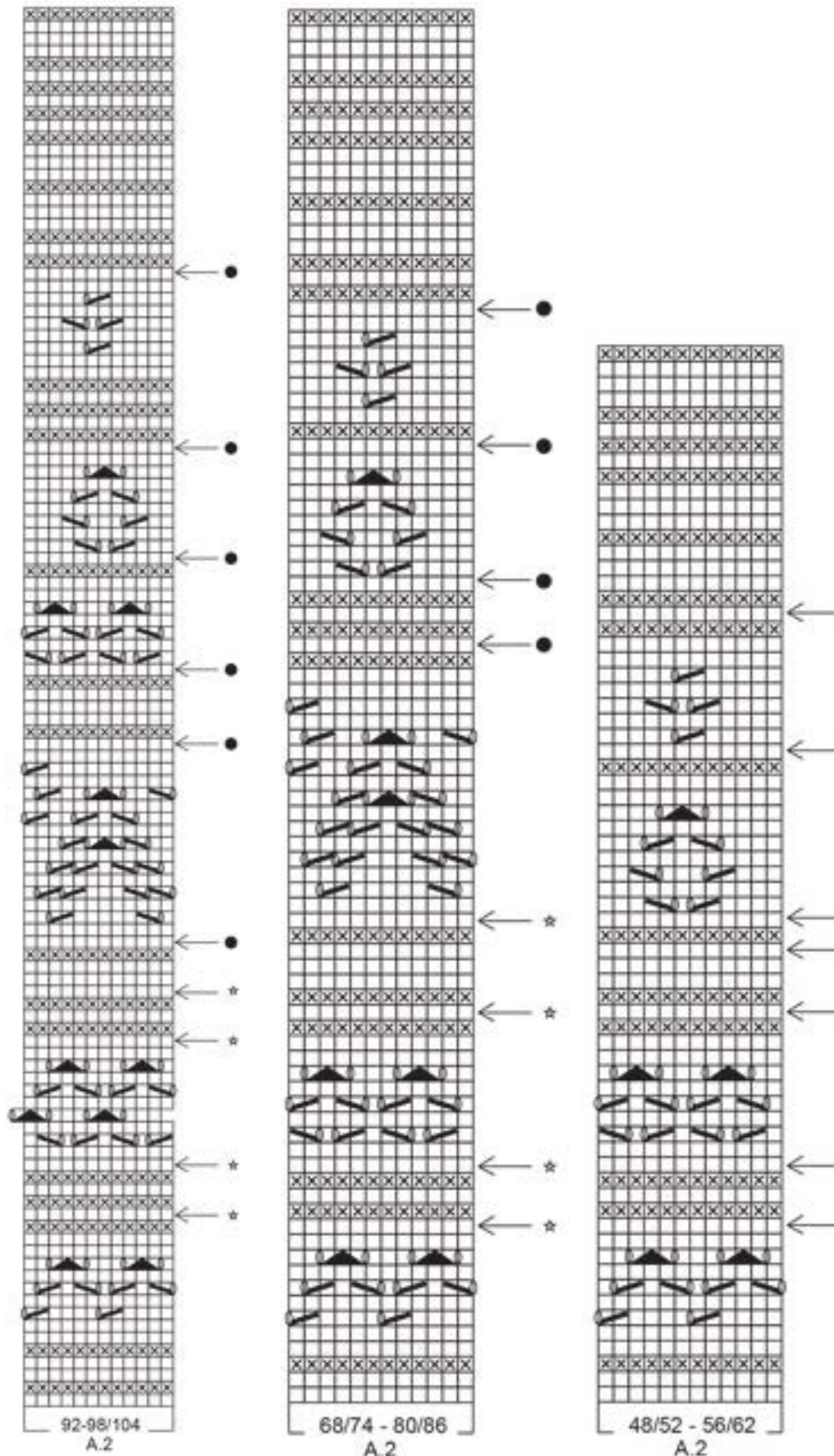


DIAGRAM EXPLANATIONS:

- = knit from the right side, purl from the wrong side
- = purl from the right side, knit from the wrong side
- = knit 2 together
- = slip 1 stitch knitwise, knit 1, pass slipped stitch over
- = between 2 stitches, make 1 yarn over
- = slip 2 stitches knitwise, knit 1, pass the 2 slipped stitches over
- = on this round, decrease 6 stitches evenly
- = on this round/row, decrease 12 stitches evenly

By special permission. Copyright DROPS DESIGN A/S. DROPS pattern: z-100-by