

'Malena' Knitted Top with Lace Pattern and Raglan Sleeves

knitted in Drops Safran



By special permission. Copyright DROPS DESIGN A/S. DROPS pattern: e-223

'Malena' - knitted DROPS top with lace pattern and raglan in "Safran". Size: S - XXXL.
By special permission. Copyright DROPS DESIGN A/S. DROPS pattern: e-223

SIZE:

Size: S/M - L/XL - XXL/XXXL

MATERIALS:

- **Drops Safran** (100% cotton, 4 Ply yarn, available in 50g balls):
300 - 350 - 400 g colour no. 17 'White'
- **A 3mm 80cm circular knitting needle**
(or size needed to get 24 sts x 32 rows in stocking st = 10 x 10 cm)

PATTERN INFORMATION:

GARTER ST (in the round on circular needle):

* K 1 round and P 1 round *, repeat from *-*. 1 ridge = 2 rounds.

GARTER ST (back and forth on needle):

K all rows. 1 ridge = 2 rows K.

PATTERN:

See diagrams A.1-A.3. The diagrams show all rows in pattern seen from RS.

DECREASE TIP:

Dec 1 st before 1st, 3rd, 5th, 7th marker as follows:

Work until 2 sts remain before marker; slip 1 st as if to K, K 1, pss0.

Dec 1 st after marker as follows: K 2 tog.

INSTRUCTIONS:**BODY:**

Worked in the round on circular needle from mid back.

Cast on 224-280-336 sts on 3mm circular needle with Safran.

Work 2 ridges in GARTER ST over all sts – see explanation above, then work A.1 (= 14 sts) over all sts (= 16-20-24 repetitions in width). Continue pattern like this.

When piece measures 32 cm, adjust so that next round is 13th or 27th round in diagram A.1, work as follows:

A.1 over the first 52-66-80 sts (NOTE: Work in stocking st over the last st, not K 2 tog as in diagram).

Cast off the next 8 sts (= the last 4 and first 4 sts in A.1).

Beg A.1 after 4 sts in diagram (NOTE: Do not K 2 tog and 1 YO as in diagram) and work A.1 over the next 104-132-160 sts (NOTE: Work in stocking st over the last st, not K 2 tog as in diagram).

Cast off the next 8 sts (= the last 4 and first 4 sts in A.1).

Beg A.1 after 4 sts in diagram (NOTE: Do not K 2 tog and 1 YO over the first 4 sts as in diagram) and work A.1 over the last 52-66-80 sts.

8 sts cast off in each side of piece and 208-264-320 sts remain on needle.

SLEEVES:

Worked back and forth on needle.

Cast on 86-100-114 sts (incl 1 edge st in each side) on 3mm circular needle with Safran.

Work 2 ridges, then work as follows - from RS: 1 edge st in garter st, A.1 (= 14 sts) over the next 84-98-112 sts and finish with 1 edge st in garter st.

When A.1 has been worked 1 time vertically, work the first 13 rows 1 more time. AT THE SAME TIME on last row cast off 5 sts (incl 1 edge st) in each side of piece. (NOTE: work in stocking st over the last st in A.1 while casting off sts.) = 76-90-104 sts on needle.

Cut and fasten the yarn.

YOKE:

Slip sleeves on to same circular needle 3 mm as body = 360-444-528 sts.

Work as follows:

Beg mid back on 14th round: A.1 (= 14 sts) over the next 42-56-70 sts, A.2 (= 10 sts) AT THE SAME TIME insert 1st marker after 9 sts, A.3 (= 10 sts) AT THE SAME TIME insert 2nd marker after 1 st (= 2 sts between markers), A.1 over the next 56-70-84 sts, A.2 AT THE SAME TIME insert 3rd marker after 9 sts, A.3 AT THE SAME TIME insert 4th marker after 1 st (= 2 sts between markers), A.1 over the next 84-112-140 sts, A.2 AT THE SAME TIME insert 5th marker after 9 sts, A.3 AT THE SAME TIME insert 6th marker after 1 st (= 2 sts between markers), A.1 over the next 56-70-84 sts, A.2 AT THE SAME TIME insert 7th marker after 9 sts, A.3 AT THE SAME TIME insert 8th markers after 1 st (= 2 sts between markers), A.1 over the last 42-56-70 sts.

Continue this pattern AT THE SAME TIME dec for raglan – see DECREASE TIP – as follows:

Dec 1 st before 1st, 3rd, 5th and 7th marker and 1 st after 2nd, 4th, 6th and 8th marker every other round (= 8 sts dec) 28-35-42 times in total = 136-164-192 sts remain on needle.

Work 2 ridges in garter st over all sts, AT THE SAME TIME on next to last round dec 20-40-58 sts evenly = 116-124-134 sts.

Cast off.

ASSEMBLY:


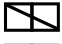



Sew tog the openings under the sleeves and sleeve seams.

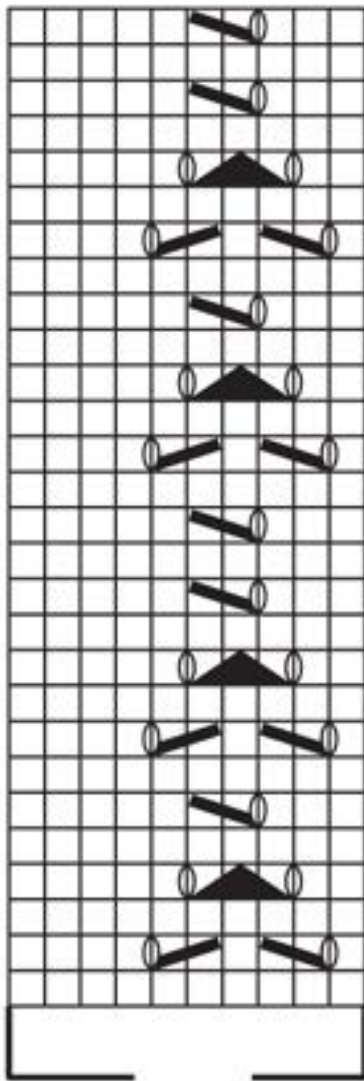


DROPS DESIGN
www.garnstudio.com

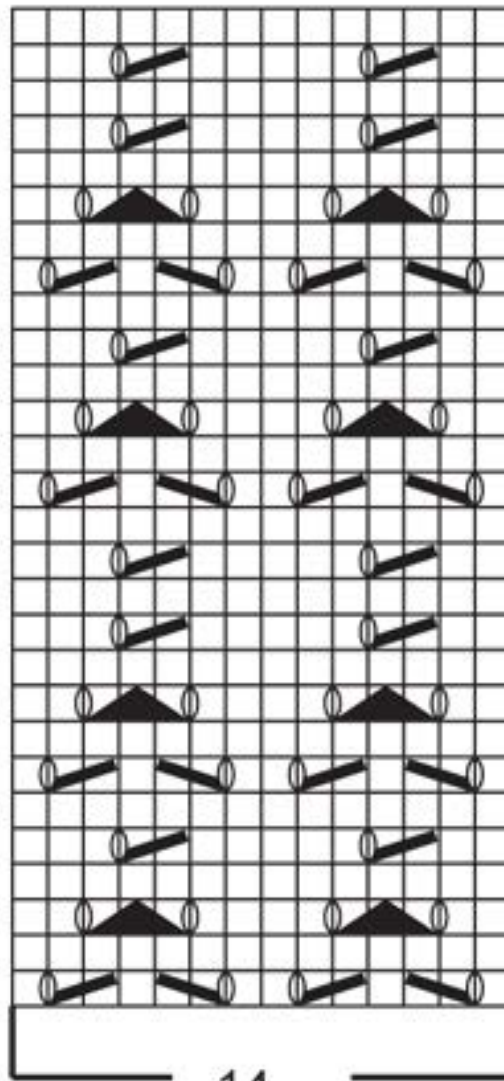
By special permission. Copyright DROPS DESIGN A/S. DROPS pattern: e-223

DIAGRAMS:

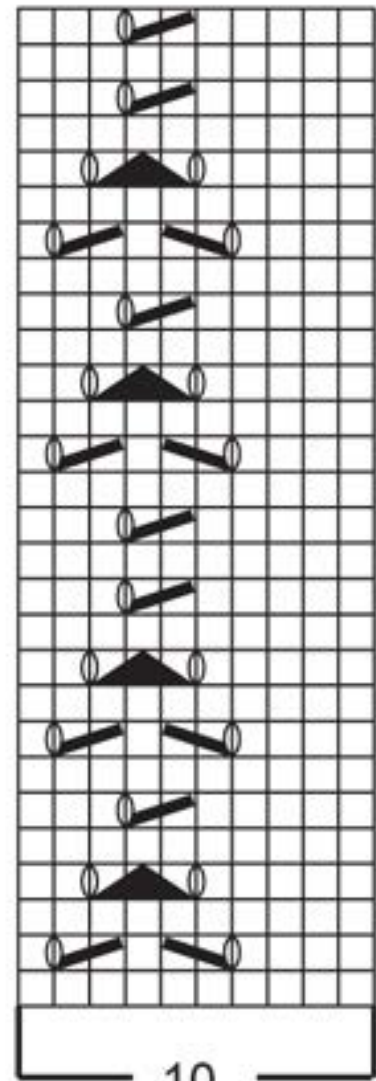
-  = K from RS, P from WS
-  = slip 1 st as if to K, K 1, pss0
-  = K 2 tog
-  = 1 YO between 2 sts
-  = slip 1 st as if to K, K 2 tog, pss0



10
A.2

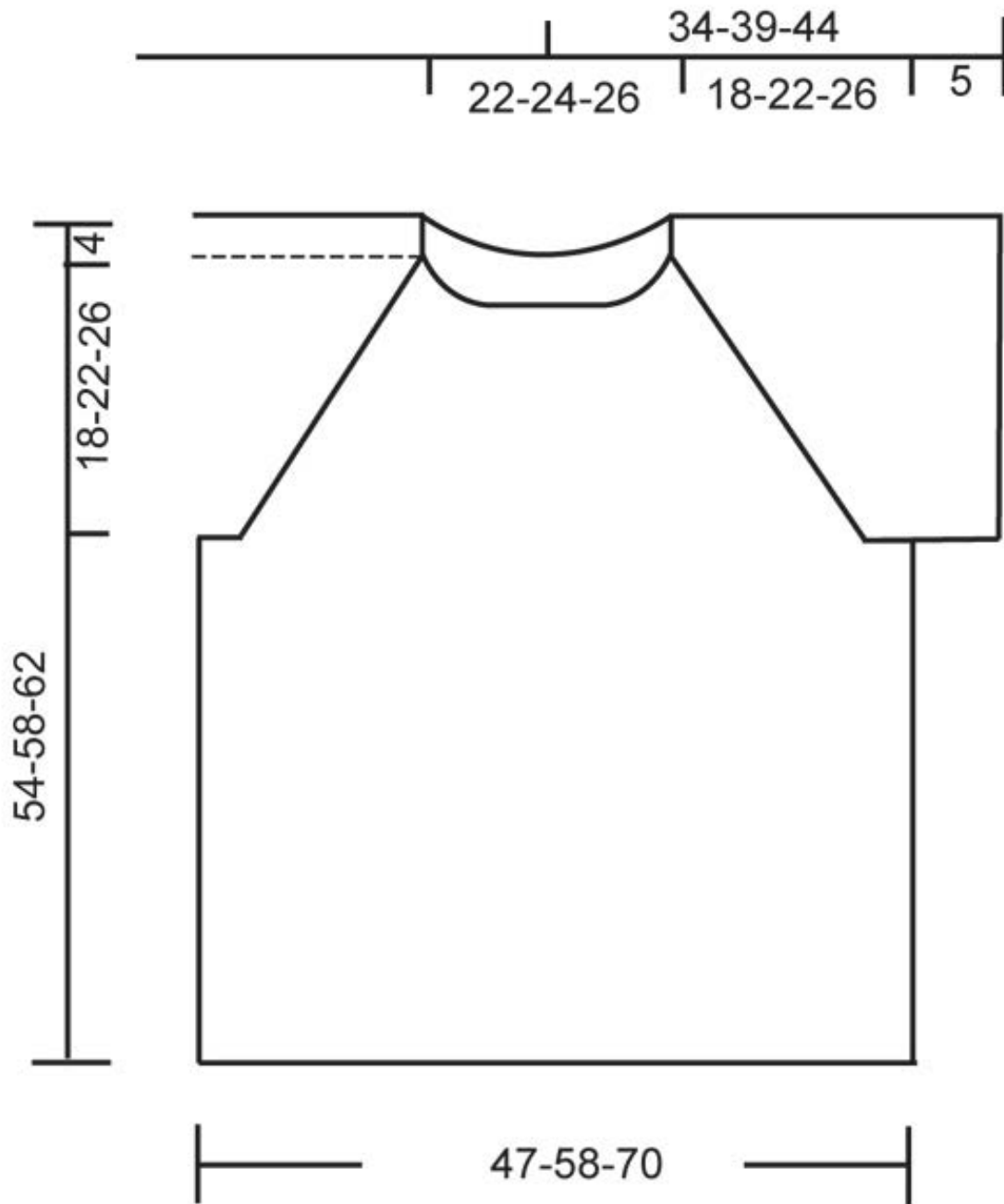


14
A.1



10
A.3

By special permission. Copyright DROPS DESIGN A/S. DROPS pattern: e-223



By special permission. Copyright DROPS DESIGN A/S. DROPS pattern: e-223