

'Blue Breeze' Poncho

knitted in Drops Paris



DROPS DESIGN[®]
www.garnstudio.com

By special permission. Copyright DROPS DESIGN A/S. DROPS pattern: w-466

Knitted DROPS poncho in "Paris". Size: S - XXXL.

By special permission. Copyright DROPS DESIGN A/S. DROPS pattern: w-466

SIZE:

Size: S/M - L/XL - XXL/XXXL

Full Length: 57 - 65 - 73 cm

MATERIALS:

- **Drops Paris** (100% cotton, Aran weight yarn, available in 50g balls):
500 - 550 - 650 g colour no. 29 'Light Ice Blue'
- **A 6mm 80cm circular knitting needle** (or size needed to get 21 sts x 28 rows in stocking st = 10 x 10 cm or 28 sts wave pattern in width = 10 cm)

PATTERN INFORMATION:

GARTER ST:

Back and forth on needle: K all rows. 1 ridge = 2 rows K.

PATTERN:

See diagrams A.1 to A.3, diagrams show all rows in pattern seen from RS.

DECREASE TIP:

All dec are done in pattern A.1 on every row worked from RS (not on rows with holes), i.e. 4 rows with dec on every repetition of A.1 (= 12 rows). Dec 1 st by K 2 sts tog.

INSTRUCTIONS:

BACK PIECE:

Worked back and forth on circular needle.

Cast on 35-37-39 sts with Paris on 6mm circular needle. Work 6 rows in GARTER ST - read explanation above. AT THE SAME TIME cast on 2 new sts at the end of every row = 47-49-51 sts (12 new sts).

Then work as follows:

K the 2 new sts, then A.1A 1 time. Repeat A.1B until 3 sts remain. Finish with A.1C and cast on 2 new sts at the end of row.

Continue with A.1 and cast on 2 new sts at the end of every row. **REMEMBER THE KNITTING TENSION!**

All sizes:

Work A.1 2-3-3 times vertically in total (= 24-36-36 rows A.1, 30-42-42 rows worked in total).

SIZE S/M and XXL/XXXL:

Then work 1st-8th row in A.1 while at the same time casting on 2 new sts at the end of every row.

Size: L/XL:

Then work 1st-2nd row in A.1 while at the same time casting on 2 new sts at the end of every row.

All sizes:

= 111-125-139 sts on row (38-44-50 rows worked in total). Piece measures approx. 17-19-22 cm.

On next row, from RS work A.2 as follows: 6 sts in garter st, work A.2A 1 time, repeat A.2B 5-6-7 times, then A.2C 1 time, finish with 6 sts in garter st.

Continue with A.2 and 6 sts in garter st in each side.



READ ALL OF THE FOLLOWING SECTION BEFORE CONTINUING.

When A.2 has been worked 1 time vertically (piece measures approx. 33-35-38 cm), work 1 ridge over all sts (= 2 rows K).

Then work A.1 with 1 edge st in garter st in each side (beg with 1st row in A.1). AT THE SAME TIME dec 4-3-3 sts evenly on every K row from RS - READ DECREASE TIP - 7-9-11 times in total.

On next row from RS, dec 2-5-1 sts evenly = 81-93-105 sts on row, K 1 row from WS (24-30-36 rows A.1 in total after A.2). Piece measures approx. 43-48-53 cm.

Continue with A.3 as follows: 1 edge st in garter st, work A.3 a total of 13-15-17 times in width, finish with 1st st in A.3 and 1 edge st in garter st. Continue with A.3 and 1 edge st in each side.

When A.3 has been worked 1 time vertically (piece measures approx. 47-52-57 cm), work 1 ridge over all sts (= 2 rows K). Then work A.1 with 1 edge st in garter st in each side until finished measurements (beg with 1st row in A.1). AT THE SAME TIME dec 5 sts evenly on every K row from RS 7-9-12 times in total.

On next row from RS, dec 7-7-0 sts evenly = 39-41-45 sts on row, K 1 row from WS (24-30-36 rows A.1 in total after A.3). Piece measures approx. 57-65-73 cm.

Loosely cast off all sts.

FRONT PIECE:







Cast on and work as back piece.

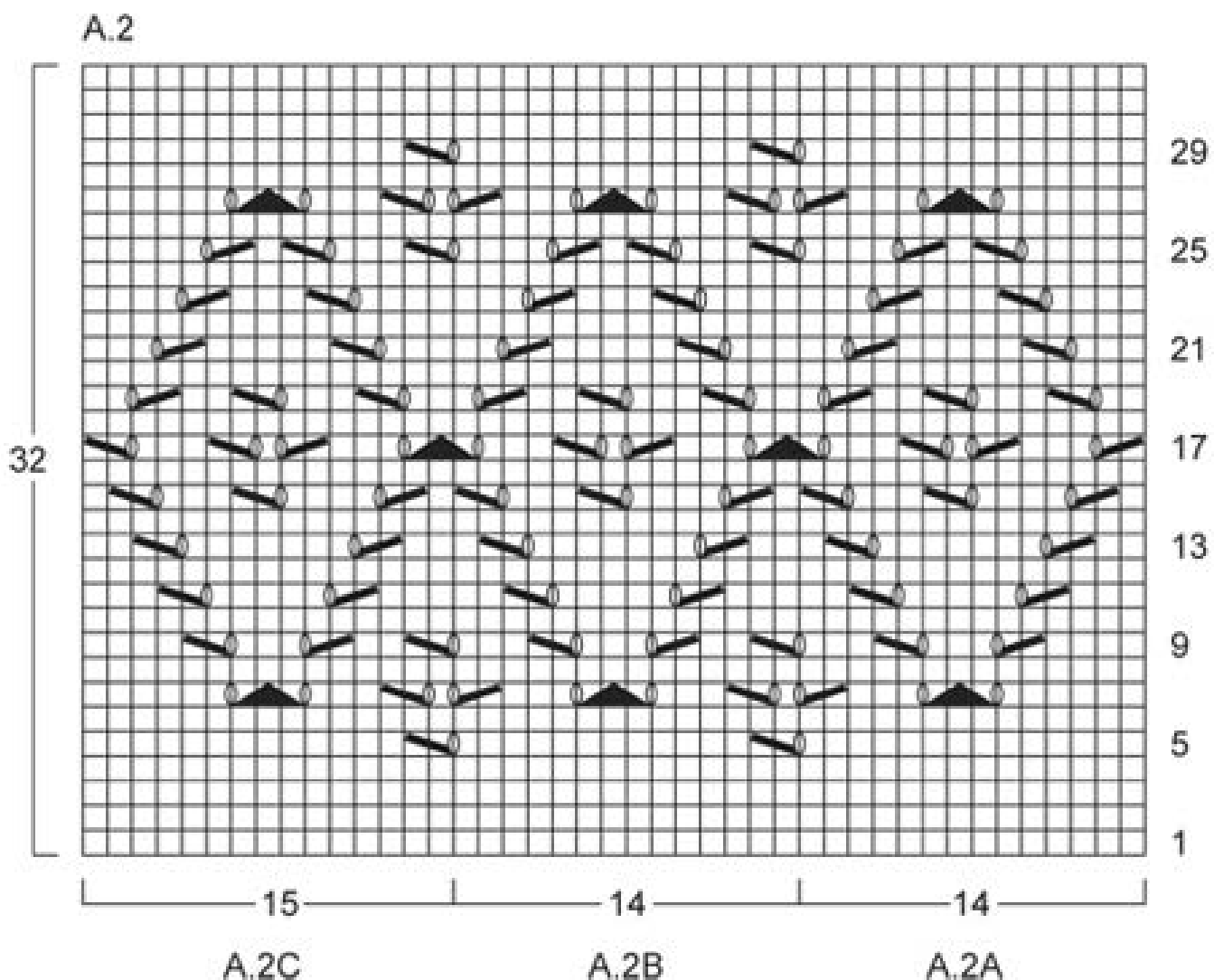
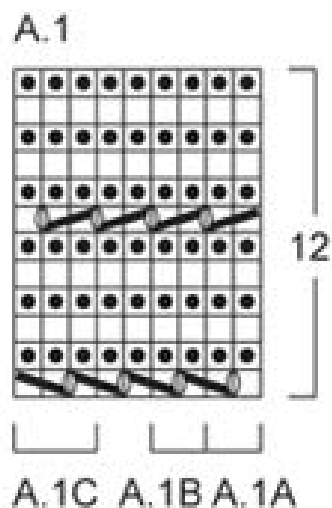
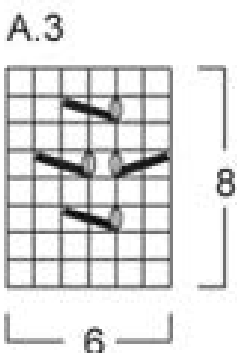
ASSEMBLY:

Sew the side seams inside 1 edge st.

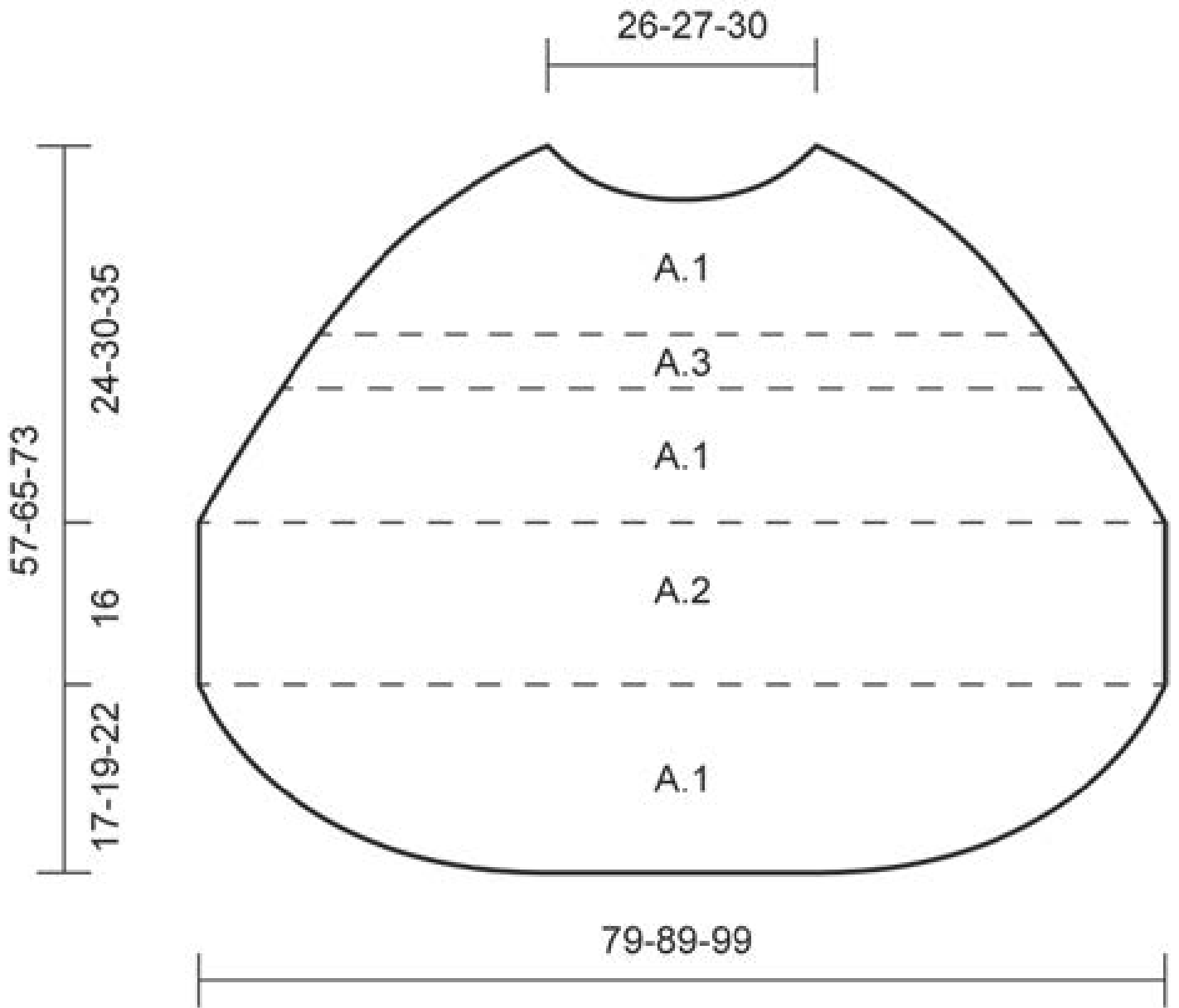
By special permission. Copyright DROPS DESIGN A/S. DROPS pattern: w-466

DIAGRAMS:

-  = K on RS, P on WS
-  = K on WS
-  = 1 yo between 2 sts
-  = slip 1 st as if to K, K2 tog, pssso.
-  = K2 tog
-  = slip 1 st as if to K, K1, pssso



By special permission. Copyright DROPS DESIGN A/S. DROPS pattern: w-466



By special permission. Copyright DROPS DESIGN A/S. DROPS pattern: w-466