

# 'Summer Grazing' Potholder

knitted in Drops Safran



**DROPS DESIGN**  
[www.garnstudio.com](http://www.garnstudio.com)

*By special permission.  
Copyright DROPS DESIGN A/S  
DROPS pattern no: e-259*

**MEASUREMENTS:**

Approx. 20 x 20 cm

**MATERIALS:**

Drops Safran (4 Ply) in the following shades:

50g colour 05: Light Blue Purple

50g colour 31: Lime

50g colour 55: Cerise

50g colour 18: Off White

50g colour 16: Black

A 3mm circular needle – or the size needed to get 24 stitches and 32 rows stocking stitch on 10 cm in width and 10 cm in height.

**PATTERN INFO:**

The potholder is worked in the round with circular needle.

See diagram A.1.

RIDGE/GARTER STITCH (worked in the round):

1 ridge = 2 rounds. Knit 1 round and purl 1 round.

**PATTERN:**

**POTHOLDER:**

Cast on 96 stitches with a 3mm circular needle and colour no. 31 Lime.

Work 2 RIDGES – see description above.

Insert 1 marker thread at the beginning of the round and 1 marker thread after 48 stitches (= marks the sides).

Continue by working A.1 over all the stitches (= 12 repeats in width).

When A.1 has been completed 1 time in height, work 2 ridges with light blue purple.

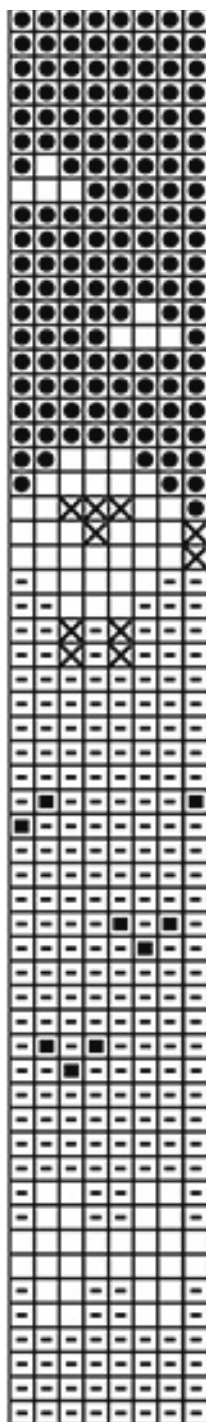
Knit 1 round. At the end of the round, cast on 20 new stitches on the needle.

Turn the piece, cast off the 20 stitches which were cast on and then cast off the remaining 96 stitches from the wrong side.

Fold the potholder double so that the marker threads are in the sides.

Sew the potholder together at the top and bottom with small stitches.

**DIAGRAM A.1:**



**DIAGRAM EXPLANATIONS:**

- = Lime
- = Off White
- = Cerise
- ⊗ = Black
- = Light Blue Purple



 **DROPS DESIGN**<sup>®</sup>  
www.garnstudio.com

By special permission.  
Copyright DROPS DESIGN A/S  
DROPS pattern no: e-259